



EAACI
EUROPEAN ACADEMY OF ALLERGY
AND CLINICAL IMMUNOLOGY

European Academy of
Allergy and Clinical Immunology
17 – 21 June 2017
Helsinki, Finland



Preliminary Programme

On the Road to Prevention and Healthy Living

Visit the
website
for more
information



www.eaaci.org

#eaaci2017

EAACI Executive Committee

EAACI Board of Officers

A. Muraro, President
 P. Hellings, Secretary General
 M. Jutel, Treasurer
 I. Agache, Vice-President Communications and Membership, President Elect
 L. K. Poulsen, Vice-President Congresses
 P. Schmid-Grendelmeier, Vice-President Education and Specialty
 N. Papadopoulos, Past President

EAACI Section Chairpersons

Ö. Kalayci, Asthma
 C. Bindslev-Jensen, Dermatology
 R. Mösges, ENT

L. O'Mahony, Immunology
 G. du Toit, Pediatrics
 O. Tsilochristou, Junior Members

EAACI Interest Group Representatives

S. Quirce
 I. Skypala

Members at Large

M. B. Bilò
 T. Chivato
 K. Hoffmann-Sommergruber
 M. Khaitov
 S. Lau
 G. Roberts

Adjunct Members

F. Braidò, CME Committee Chair
 A. Frew, Ethics Committee Chair
 R. Gerth van Wijk, Specialty Committee Chair
 S. Halken, Scientific Programme Coordinator
 A. Lauerma, EAACI Congress 2017 Chair
 C. Schmidt-Weber, Exam Committee Chair
 S. Smolinsk, EAACI Web Editor
 F. Timmermans, Patients Organisations Committee Chair
 O. Tsilochristou, EAACI Social Media Editor
 T. Werfel, National Allergy Societies Committee Chair

Local Organising Committee (LOC)

A. Lauerma, EAACI Congress 2017 Chair
 M. Mäkelä, EAACI Congress 2017 Secretary
 N. Fyhrquist, LOC Secretary
 T. Haahtela, EAACI Congress 2017 Honorary President

J. Karjalainen
 P. Kauppi
 M. Khaitov
 E. Melén
 A. Pelkonen
 S. Plado

R. Renkonen
 A. Salava
 J. Savolainen
 S. Toppila-Salmi
 E. Valovirta

Scientific Programme Committee (SPC)

S. Halken	SPC Coordinator
A. Muraro	2015 – 2017 EAACI President
N. Papadopoulos	EAACI Past President
P. Hellings	EAACI Secretary General
L. K. Poulsen	EAACI Vice-President Congresses
B. Bohle	EAACI Congress 2016 Chair
O. Tsilochristou	JM Chair
A. Lauerma	EAACI Congress 2017 Chair
M. Mäkelä	EAACI Congress 2017 Secretary
N. Fyhrquist	EAACI Congress 2017 LOC Secretary
T. Haahtela	EAACI Congress 2017 Honorary President
K. Hoffmann-Sommergruber	EAACI Congress 2016 LOC Secretary
Z. Szepfalusi	EAACI Congress 2016 LOC Member

Section Secretaries

Z. Diamant	Asthma
S. Weidinger	Dermatology
P. Gevaert	ENT
J. Schwarze	Immunology
M. Alvaro Lozano	Pediatrics

Interest Group (IG) Chairs

J. Buters	Aerobiology & Pollution
M. Kurowski	Allergy, Asthma & Sports
H. J. Hoffmann	Allergy Diagnosis
K. Grimshaw	Allied Health
O. Boyman	Biologicals
M. J. Torres	Drug Allergy
Ch. Apfelbacher	Epidemiology
C. Mills	Food Allergy
C. Drunen	OMICS and Systems Medicine
O. Pfaar	Immunotherapy
H. Smits	Infections & Allergy
G. Sturm	Insect Venom Hypersensitivity
J. Walusiak-Skorupa	Occupational Allergy
A. Leonardi	Ocular Allergy
R. Müller	Comparative Veterinary Allergology
D. Ryan	Primary Care
C. Agostini	Primary Immunodeficiency Diseases
A. Straumann	Eosinophilic Eosophagitis

Dear friends, colleagues,

We very much look forward to hosting the EAACI Congress 2017, from 17 – 21 June, and to wishing you a warm welcome to Finland and the beautiful city of Helsinki.

The theme for the Helsinki Congress is “On the road to prevention and healthy living”. A unifying theme for EAACI, this represents the next step in making our patients’ lives healthy, despite their allergies. With more than half of all Europeans soon expected to suffer from allergy, ensuring our patients have a better quality of life, despite the allergy epidemic, is an obvious goal for EAACI. It is also a theme in the true Finnish Allergy Programme spirit: wishing good life for all people.

The EAACI Congress 2017 is to be held in the Messukeskus Congress Center, which is easily reached from the city centre in just 5 minutes by train. This recently renovated venue offers the highest standards in conference facilities, with well-equipped and easy-to-find session rooms and a full digital environment.

Helsinki itself is a modern city with all its attractions and services within walking distance. It has excellent hotels and restaurants for all budgets, monuments, parks, shopping, market squares and other places to visit, as well as the sea with picturesque boat rides in the Helsinki archipelago, a lively nightlife and even free bicycles provided by the city. Helsinki manages to combine big city life with the green and beautiful countryside in which it resides. With something for all tastes, Helsinki is a unique Nordic experience.

Welcome to Helsinki!

Antti Lauerma
EAACI Congress 2017 Chair



Dear EAACI friends

On behalf of the European Academy of Allergy and Clinical Immunology it is my great pleasure to invite you to Helsinki for the EAACI Congress 2017. Helsinki promises to be a wonderful Congress venue and offers an excellent opportunity for us to investigate, at close hand, the Finnish National Programme for Allergy – a programme which is becoming a model for other EU countries to follow.



Allergic diseases can be better managed with early diagnosis, and an awareness of allergy symptoms is crucial to this aim. Recognition of the value of the allergy specialty and national policies for the education of health professionals at all levels are essential to achieve progress in this area and to promote an effective understanding and awareness of allergic symptoms. We all have much to learn from the Finnish model.

For many of you, this will be one of many similar conferences you have attended; for others, it will be the first. For all of us, the city of Helsinki and the friendly and open Nordic approach of its people will be the perfect context for our Congress, for sharing and discussing high level science, and translating that science into concrete initiatives for the benefit of allergy sufferers in Europe and across the world.

I do hope that you will be able to join us at the EAACI Congress 2017 in Helsinki and I look forward to seeing you there.

Antonella Muraro
EAACI President

Contents

Committees.....	2
Welcome	3
Call for Abstracts	4
Registration and Payment Information.....	5
General Information.....	6
Programme at a Glance	7 -14
Hotels in Helsinki.....	15
Exhibitors and Sponsors	17
Important Addresses / Dates.....	22

Call for Abstracts

The EAACI Congress 2017 Scientific Programme Committee and the Local Organising Committee welcome the submission of original contributions for oral and poster presentations.

Abstract Submission

Abstract submission will open on 20 October 2016. The deadline to submit abstracts is 15 January 2017. Notifications of acceptance or rejection of abstracts will be sent to the corresponding author of the abstract by the beginning of March 2017. Please submit your abstract at <http://www.eaaci.org/eaaci-congresses/eaaci-2017/abstract-submission>

Abstract Regulations

- Abstracts can only be submitted electronically on the Congress website.
- Authors can present more than one abstract.
- Authors can be the co-author of more than one abstract.
- Submission of closely related topics by the same group is discouraged.
- Abstracts will only be considered for presentation if they are not published or submitted for presentation elsewhere.
- All abstracts must be written and presented in English.
- It is the presenting author's responsibility to submit a correct abstract.
- Presented abstracts will be published in Allergy after the Congress

Congress Scholarship

The EAACI Congress 2017 and the Local Organising Committee offer 100 Congress Scholarships to EAACI Junior Members. A scholarship application can only be made in connection with an abstract submission and must be applied for by the presenting author of an abstract. The application deadline is 15 January 2017. As a Congress Scholarship recipient you will receive complimentary registration to the Congress, as well as shared accommodation in a twin-bedded room (up to four nights) and have travel costs refunded up to EUR 500.

EAACI Abstract Award

All abstract presenters automatically enter the competition for the EAACI abstract award of EUR 200. The award winners will be announced at the EAACI booth during the Congress and on the website.

Registration

The presenting author of an abstract must register for the Congress by 31 March 2017. Until this date the presenting author is offered a prolonged "early fee". All presenting authors must be registered before this date in order to publish their abstract in the Congress programme, on the Congress website and in the app. The registration fee may be refunded if the abstract is rejected.

Presentations

Accepted abstracts will be presented in Oral Abstract Sessions, Poster Discussion Sessions and Thematic Poster Sessions.

Contact

Contact the EAACI Congress 2017 Abstract Team at eaaci2017abstract@eaaci.org for all inquiries about abstracts or if you do not receive a confirmation e-mail after submitting an abstract (please do not resubmit the abstract). Similarly, if you have not received a notification of the status of your abstract by the end of March 2017, please contact the EAACI Congress 2017 Abstract Team.

More Information

Abstract submission instructions are available on the Congress website. We ask you to read the instructions carefully before submitting your abstract. Presentation guidelines will be available on the Congress website and sent out to each presenting author in Spring 2017.

Please visit the Congress Website to register at www.eaaci2017.org or contact the EAACI Congress 2017 Registration Team for further information at eaaci2017registration@eaaci.org

Registration Fees	Paid by 8 February	Paid from 9 February to 10 May	Paid from 11 May to 15 June
EAACI Members ¹	EUR 495	EUR 580	EUR 615
Non-Member	EUR 670	EUR 775	EUR 825
EAACI Junior Member ¹	EUR 285	EUR 330	EUR 350
Special Rates (Students, Nurses, Dieticians and Lab Technicians) ²	EUR 310	EUR 365	EUR 385
Postgraduate Courses (PGC)	EUR 85	EUR 85	EUR 85
PGC - EAACI Junior Member/Special Rate ²	EUR 60	EUR 60	EUR 60
Learning Lounges (LL)	EUR 35	EUR 35	EUR 35
LL – EAACI Junior Member/Special Rate ²	EUR 20	EUR 20	EUR 20
Russian Day (in Russian language) ³	EUR 85	EUR 85	EUR 85
Russian Day - EAACI Junior Members / Special Rates ^{2,3}	EUR 60	EUR 60	EUR 60
Allied Health Day ⁴	EUR 85	EUR 85	EUR 85
Allied Health Day - EAACI Junior Members / Special Rates ^{2,4}	EUR 60	EUR 60	EUR 60

Please note that additional fees of EUR 20 (for EAACI Members) and 25 EUR (for Non-Members) will apply to onsite registration at the Congress itself.

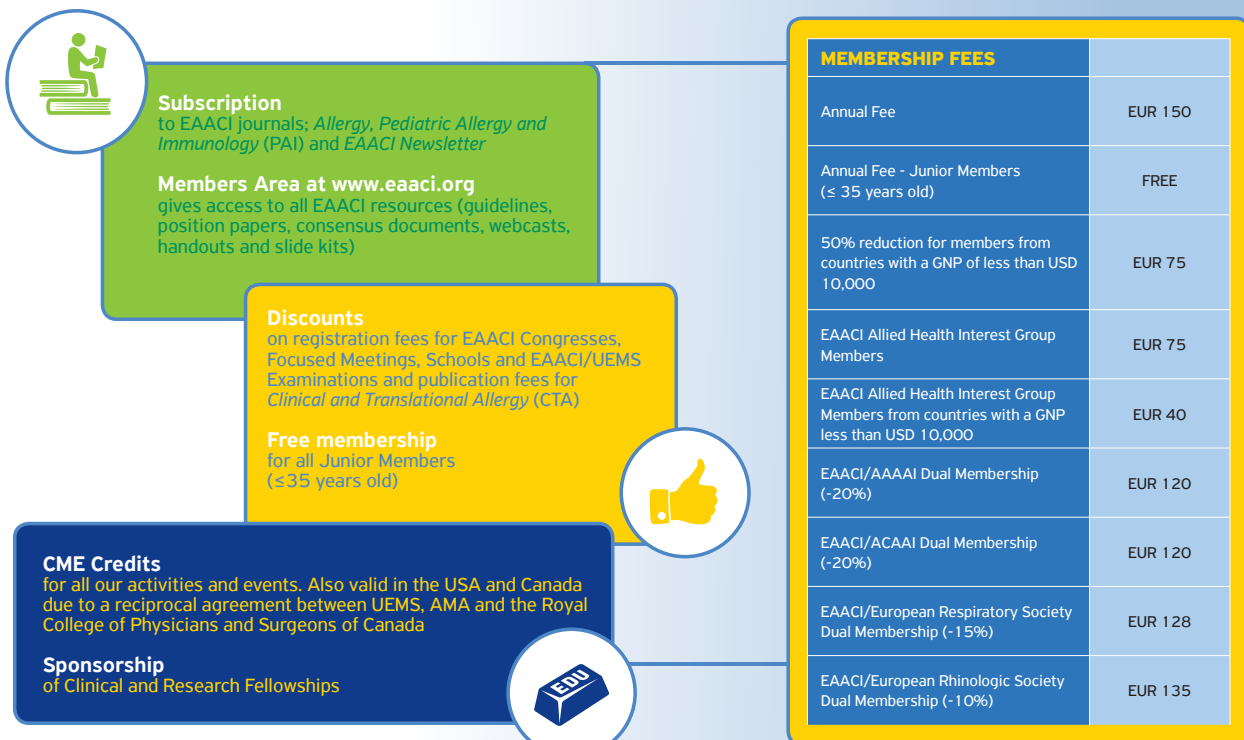
¹ To benefit from the fees for EAACI Members, please pay your membership fee prior to registration and indicate your membership number in the online registration.

² Nurse, dietician, laboratory technician statuses must be certified by a Head of Hospital / Department and must be submitted with registration. Pre-registration is required. PhD students, MD students or fellows in training are eligible for the student fee until the age of 35. Student status must be proven by a student ID or certified by a Head of Department and a copy of an ID card or passport must be submitted with the registration.

³ Presentations will be held in Russian language, no translation will be provided. The registration fees apply only if the Russian Day is booked separately. If the participant is registered for the whole Congress, the Russian day is included for free.

⁴ The registration fees apply only if the Allied Health Day is booked separately. If the participant is registered for the whole Congress, the Allied Health Day is included for free.

EAACI Membership Benefits



Find out more about EAACI Membership and apply online at www.eaaci.org

About Helsinki

Helsinki is the capital and largest city of Finland. It is located in the region of Uusimaa, in southern Finland, on the shore of the Gulf of Finland. The Helsinki metropolitan area is the fourth largest metropolitan area in the Nordic countries, Helsinki is Finland's major political, educational, financial, cultural, and research center as well as one of Northern Europe's major cities.

Climate

Helsinki's climate is typical of its northerly situation. Its intermediate climate combines characteristics of both a maritime and a continental climate. The proximity of the Arctic Ocean and the North Atlantic creates cold weather, while the Gulf Stream brings in warmer air.

The summer in Helsinki is bright. The days are at their longest in the second half of June, when the sun stays above the horizon for 19 hours.

Source: Visit Helsinki (<http://www.visithelsinki.fi/en/come/welcome-to-helsinki/climate-and-weather-in-helsinki>)

CME Credits

An application will be made to the UEMS-EACCME® for CME accreditation of this Meeting. Information and instructions on how to receive your CME credits will be included in the Final Programme and will be online closer to the event.

Currency

The local currency is the Euro (EUR).

Dress Code

The dress code will be informal throughout the Congress.

EAACI Membership

EAACI gives its members priority status at EAACI Congresses, Focused Meetings and all other EAACI events and activities. Members receive a discount of 25% on the registration fee. Junior members are entitled to register for the Congress for an even lower fee. EAACI offers free Junior membership to individuals up to 35 years of age (with online access to the journals *Allergy* and *Pediatric Allergy and Immunology*). In addition, EAACI also offers a 50% reduction of membership fees to members from countries with a GNP of less than USD 10,000 per capita,

with all membership benefits. As an EAACI member you will be kept informed of the latest research and developments through our official journals *Allergy*, *Pediatric Allergy and Immunology*, and *Clinical Translational Allergy* (electronic version). These journals contain editorials, reviews, original articles, educational series and EAACI Position Papers. A wealth of resources, such as webcasts and slide kits hand outs, is also available in the Members Area of the website. Experience and be part of the advancement of the knowledge and practice of allergy, asthma and immunology for optimal patient care! For more information and to apply for membership, visit: www.eaaci.org.

Exhibition

The EAACI Congress 2017 in Helsinki will include an exhibition that will be open from 09:00 – 17:30 on 18 – 20 June. For more information regarding the exhibition and other sponsorship opportunities, please visit the Congress website or contact eaaci2017exhibition@eaaci.org

Language

The official language of the Congress is English.

Local Time

The time zone in Helsinki is Eastern European Time (EET).

Getting to Helsinki

Helsinki Airport serves around two hundred international flights each day. The journey time between the airport and city centre is around 30 minutes.

Transportation

By car: Street address: Messuaukio 1, 00520 Helsinki, Finland
Address of the Messukeskus Car Park for GPS devices: Ratapihantie 17
Address of the Conference Centre for GPS devices: Ratamestarinkatu 13

By train: Local trains I and P operate between Helsinki Airport and the city centre on the Ring Rail Line, which opened in July 2015. The journey time between the airport and the city centre (Central Railway Station) is approximately half an hour. A regional ticket costs EUR 5.50 and can be purchased from Helsinki Region Transport (HSL) ticket machines and on board trains from a ticket sales carriage.

By bus: The Finnair City Bus operates between the airport and city centre (Elielinaukio) every 20 minutes and takes around 30 minutes. Click here to see the schedule. A single ticket costs EUR 6.20 when purchased online in advance or EUR 6.30 from the driver.

Bus 615 ("Lentoasema-Rautatientori") is operated by Helsinki Region Transport (HSL). A regional ticket costs EUR 5.50 and can be purchased from Helsinki Region Transport (HSL) ticket machines or from the driver with cash. At night you can also take the 415N night bus.

Taxi: Taxi stands are located outside the arrival terminals at Helsinki Airport. It takes around 15-20 minutes to the city centre and will cost around EUR 45.00.

Public Transport between the City Centre and Messukeskus

Messukeskus is located close to the centre of Helsinki, with excellent transport connections. EAACI will be using the Southern Entrance at Messuaukio 1 and the Northern Entrance on the same side as the car park.

I and P trains run from the airport to the nearby Pasila railway station. The journey time is 30 minutes. The trains leave every 10 minutes in the daytime. By taxi, you can reach Messukeskus in 15–20 minutes. Trams from the centre of Helsinki: 7A, 7B and 9
Buses: 506 and 69 to Messukeskus, and buss 551 from Espoo to Pasila railway station
Trains: all local and long-distance trains stop at Pasila railway station, just a 300-metre walk from Messukeskus

Visa

Participants are advised to make their own arrangements with respect to entering Finland.
If you need a letter of invitation, contact eaaci2017registration@eaaci.org after your registration fee is settled.
Please apply for a visa within a reasonable time prior to making your bookings.

													09:00
													09:30
													10:00
													10:30
													11:00
													11:30
													12:00
													12:30
													13:00
													13:30
													14:00
													14:30
													15:00
													15:30
													16:00
													16:30
													17:00
													17:30
													18:00
													18:30
													19:00
													19:30
													20:00
													21:00
													22:00
													23:00

EAACI/UEMS Exam
Exam 10th EAACI/
UEMS Examination in
Allergology and Clinical
Immunology

**Clinical
Village**

PG 1
Management of drug
hypersensitivity - Basic

DA, D, P

PG 2
Contact dermatitis in
childhood - Basic

D, P

PG 3
Postgraduate Course
Immunotherapy -
Advanced

IT

PG 4
Recent developments
in gastrointestinal food
hypersensitivity - Basic

FA, P

PG 5
Food Allergy beyond
childhood - Basic

FA, P

PG 6
Tools to enhance
the value of clinic allergy
research - Basic

CA

PG 7
Diagnostic tools in
examination of the nose
- Basic

ENT

PG 8
'Omic' technologies in
Immunology - Advanced

I

PG 9
Allergy Diagnosis
2017: Novel
dimensions in ex vivo
allergy diagnostics
- Advanced

DI

PG 10
Allergy for Primary
Care doctors:
English language

PC

**Special
Session**
Russian Day

Russian
language

**Special
Session**
Allied
Health Day

**Opening
Ceremony**

**Welcome
Reception**

JMs
Junior Members
(JM Poster Sessions)

07:00									
07:30	Learning Lounge 1 Rare Allergens: Problems in Diagnosis and AIT IT, DI, CA, P, A, ENT	Learning Lounge 2 Is BAT/CRD useful for diagnosis of Food Allergy? FA, DI, P, CA	Learning Lounge 3 Ocular allergy: Differential diagnosis that you need to be aware of OA, P, CA, PC	Learning Lounge 4 Perioperative hypersensitivity: What to do when tests are negative DI, CA, DA					
08:00									
08:30	Plenary Symposium 1 Allergy prevention: The broad perspective CA, FA, A, P, PC, AH	Plenary Symposium 2 Systems allergology: Involving molecular cell models in understanding the complex immunology in allergy BA, CA, D, A, ENT, P							
09:00									
09:30									
10:00									
10:30	Symposium 1 Women in Science P, CI, DI, D	Symposium 2 Fatty acid and lipid signalling in asthma and allergic inflammation I, BA	Symposium 3 Treatment of Rhinosinusitis: State of the Art! ENT, P, PC	Symposium 4 Regulation and standardization of Allergen Immunotherapy products IT, CA, P, PC	Symposium 5 New anti-inflammatory treatments of asthma and allergy A, P, CA	Year in Review 1	CSS 1 Company Sponsored Symposium	Workshop 1 Practical approaches to feeding the food allergic child P, FA, PC, AH	
11:00									
11:30									
12:00	Clinical Village	Pro & Con 1	Lunch and Poster Viewing in the Poster Area						
12:30		Pro & Con 2							
13:00									
13:30	Symposium 6 Presidential symposium on the EAACI Allergen Immunotherapy Guidelines IT, CA, P, A, ENT	Symposium 7 Tree nut allergy in Europe FA, P, CA	Symposium 8 New Frontiers in atopic dermatitis therapy D, P, CA	Symposium 9 Important aspects of insect venom allergy CA, P, DI	Symposium 10 Airborne pollutants and allergies CA, A, ENT, PC	Hot Topic 1	CSS 2 Company Sponsored Symposium	Workshop 2 Challenges in asthma diagnosis and management A, P, PC, AH	
14:00									
14:30									
15:00									
15:30	Symposium 11 Inflammometric biomarkers in asthma A, P, CA	Symposium 12 Prevention of occupational allergy: A multidisciplinary approach CA, A, ENT	Symposium 13 Anaphylaxis FA, P, CA, PC	Symposium 14 Clinical immune tolerance: From fantasy to reality? BI, CA, CI, BA	Symposium 15 Management of drug hypersensitivity in children DA, P, CA	Hot Topic 2	CSS 3 Company Sponsored Symposium	Workshop 3 Managing allergic conjunctivitis in daily practice OA, CA, P, PC	
16:00									
16:30									
17:00									
17:30	SAT 1 Company Sponsored Satellite Symposium	SAT 2 Company Sponsored Satellite Symposium	SAT 3 Company Sponsored Satellite Symposium	SAT 4 Company Sponsored Satellite Symposium	SAT 5 Company Sponsored Satellite Symposium	SAT 6 Company Sponsored Satellite Symposium	BM 1 IG Immunotherapy - Open to all attendees IT	BM 2 IG Allergy Diagnosis - Open to all attendees DI	
18:00									
18:30									
19:00									

										07:00
										07:30
										08:00
										08:30
										09:00
										09:30
										10:00
SSS 1 AAAAI	OAS 1	OAS 2	OAS 3	OAS 4	OAS 4	PDS 1	PDS 2	PDS 3	LB PDS 1	10:30
										11:00
										11:30
Lunch and Poster Viewing in the Poster Area										12:00
Lunch and Poster Viewing in the Poster Area										12:30
Lunch and Poster Viewing in the Poster Area										13:00
SSS 2 SLAAI	OAS 5	OAS 6	OAS 7	OAS 8	OAS 9	PDS 4	PDS 5	PDS 6	PDS 7	13:30
										14:00
										14:30
										15:00
JM Sci One airway, one disease: Can the allergic march be halted?	SSS 3 APAPAR: The epidemic of food allergies: Lessons from around the world	OAS 10	OAS 11	OAS 12	OAS 13	PDS 8	PDS 9	PDS 10	LB PDS 2	15:30
										16:00
										16:30
										17:00
BM 3 IG Allergy, Asthma and Sports - Open to all attendees A, CA	BM 4 IG Primary Care - Open to all attendees PC	BM 5 IG Insect Venom Hypersensitivity -Open to all attendees CA	BM 6 IG Allied Health - Open to all attendees AH	BM 7 Junior Members (JMs)- Open to all attendees	SESSION GUIDE BM Business Meeting of EAACI Sections and Interest Groups - open to all attendees CSS Company Sponsored Symposium SSS Sister Society Symposium OAS Oral Abstract Session PDS Poster Discussion Session SAT Company Sponsored Satellite Symposium LBO Late Breaking Oral Abstract Session JM Junior Members Programme LB PDS Late Breaking Poster Discussion Session	TOPIC TRACKS A Asthma AH Allied Health BA Basic Allergy BI Biologicals CA Clinical Allergy CI Clinical Immunology D Dermatology DA Drug Allergy DI Allergy Diagnostics ENT Ear, Nose, Throat FA Food Allergy I Immunology IT Immunotherapy OA Ocular Allergy P Pediatrics PC Allergy management in Primary Care	SISTER SOCIETIES ACAAI African National Societies AAAAI American College of Allergy, Asthma & Immunology APAPARI American Academy of Allergy, Asthma & Immunology GA2LEN Asia-Pacific Association of Pediatric Allergy, Respiriology and Immunology IRINE Global Allergy and Asthma European Network GARD Immunology Research Institute of New England SLAAI Genetic and Rare Diseases Information Center WAF Latin American Society of Allergy, Asthma and Immunology World Allergy Forum			17:30
										18:00
										18:30
										19:00

07:00	Learning Lounge 5 Exercise-induced respiratory symptoms in athletes A, PC, P	Learning Lounge 6 Practical approaches to the diagnosis of hypersensitivity to Nonsteroidal Anti-Inflammatory Drugs DA, DI, CA, P	Learning Lounge 7 Drug allergy in children DA, P, CA	Learning Lounge 8 Human innate lymphoid cells: Where are they and how can we detect them? BA					
07:30									
08:00	EAACI General Assembly								
08:30									
09:00	Plenary Symposium 3 New insights into pathophysiology of upper and lower airways BA, I, A, ENT	Plenary Symposium 4 The microbiome in health and allergic disease BA, CI, A, FA, D, P							
09:30									
10:00									
10:30									
11:00	Symposium 16 Treatment of rhinitis: Current standards and new concepts ENT, CA, P, IT	Symposium 17 Fish and shell fish allergy FA, P, CA	Symposium 18 EAACI-AAAAI Practall Symposium A, D, P, CA, CI	Symposium 19 Early childhood asthma A, P, CA, PC	Symposium 20 IgE 50 years BA, CI, CA, DI, P	CSS 4 Company Sponsored Symposium	SSS 4 WAO World Allergy Forum: Mechanisms and complications of severe asthma	Workshop 4 Insect venom allergy in practice CA, P	Year in Review 2
11:30									
12:00									
12:30	Pro & Con 3	Lunch and Poster Viewing in the Poster Area							
13:00	Pro & Con 4								
13:30									
14:00	Symposium 21 Systems medicine approaches in allergic disease CA, P, BA	Symposium 22 Challenges of severe asthma in childhood A, P, PC	Symposium 23 There is something in the air: Pollens CA, PC, P, ENT, A	Symposium 24 Obesity and allergy A, P, CA, PC, AH	Symposium 25 Treatment and monitoring of Eosinophilic Esophagitis FA, CA, P	CSS 5 Company Sponsored Symposium	Practical Allergy Management Workshop 1	Workshop 5 Illustrating the use of Component Resolved Diagnosis and Basophil testing in allergy diagnosis DI, CA, P, DA	Year in Review 3
14:30									
15:00									
15:30									
16:00	Symposium 26 Pediatric allergy as seen in primary care P, PC, AH, FA, CA	Symposium 27 Ophthalmology for allergists OA, CA, P, IT	Symposium 28 Controversies in sports and asthma A, CA, P	Symposium 29 Novel roles of dendritic cells BA, A, P	Symposium 30 Molecular tools for Allergen Immunotherapy DI, IT, CA, P	CSS 6 Company Sponsored Symposium	Practical Allergy Management Workshop 2	Workshop 6 Patch testing in specific situations D, DA, DI	Year in Review 4
16:30									
17:00									
17:30									
18:00	SAT 7 Company Sponsored Satellite Symposium	SAT 8 Company Sponsored Satellite Symposium	SAT 9 Company Sponsored Satellite Symposium	SAT 10 Company Sponsored Satellite Symposium	SAT 11 Company Sponsored Satellite Symposium	SAT 12 Company Sponsored Satellite Symposium	SSS 7 IRINE: Immunology Research Institute of New England Symposium 2017: New models for analysis of allergic diseases	BM 9 IG Aerobiology and Pollution - Open to all attendees BA, CA	BM 10 IG Occupational Allergy - Open to all attendees CA
18:30									
19:00									

									07:00
									07:30
									08:00
									08:30
									09:00
									09:30
									10:00
									10:30
Hot Topic 3	OAS 14	OAS 15	OAS 16		PDS 11	PDS 12	PDS 13	LB PDS 2	11:00
									11:30
									12:30
Lunch and Poster Viewing in the Poster Area				BM 8 Pediatric Section - Open to all attendees					13:00
									13:30
JM Edu JM Educational Session	SSS 5 ACAAI: The challenge of chronic cough	OAS 17	OAS 18	LB OAS 1	PDS 14	PDS 15	PDS 16	PDS 17	14:00
									14:30
									15:30
SSS 6 Allergy in Africa	OAS 19	OAS 20	OAS 21	LB OAS 2	PDS 18	PDS 19	PDS 20	PDS 21	16:00
									16:30
									17:30
BM 11 IG Primary Immunodeficiency - Open to all attendees	BM 12 IG Drug Allergy - Open to all attendees DA, CA	BM 13 IG Epidemiology - Open to all attendees BA, CA	BM 14 IG Biologicals - Open to all attendees I, CA, CI, BI	BM 15 IG Food Allergy - Open to all attendees FA	SESSION GUIDE BM Business Meeting of EAACI Sections and Interest Groups - Open to all attendees CSS Company Sponsored Symposium SSS Sister Society Symposium OAS Oral Abstract Session PDS Poster Discussion Session SAT Satellite Symposium LBO Late Breaking Oral Abstract Session JM Junior Members Programme LB PDS Late Breaking Poster Discussion Session	TOPIC TRACKS A Asthma AH Allied Health BA Basic Allergology BI Biologicals CA Clinical Allergology CI Clinical Immunology D Dermatology DA Drug Allergy DI Allergy Diagnostics ENT Ear, Nose, Throat FA Food Allergy I Immunology IT Immunotherapy OA Ocular Allergy P Pediatrics PC Allergy management in Primary Care	SISTER SOCIETIES ACAAI African National Societies AAAAI American College of Allergy, Asthma & Immunology APAPARI American Academy of Allergy, Asthma & Immunology GA2LEN Asia-Pacific Association of Pediatric Allergy, Respiriology and Immunology IRINE Global Allergy & Asthma European Network GARD Immunology Research Institute of New England SLAAI Genetic and Rare Diseases Information Center WAF Latin American Society of Allergy, Asthma and Immunology World Allergy Forum	17:30	
									18:00
									18:30
									19:00

07:00									
07:30	Learning Lounge 9 A child with recurrent respiratory tract infections P, CI, PC, AH	Learning Lounge 10 How chest physicians approach suspected occupational work-related airway disease A, ENT, DI, PC	Learning Lounge 11 Anti IgE for the treatment of chronic urticaria D, P, BI	Learning Lounge 12 Are oral food challenges still necessary for diagnosing food allergy? FA, P, DI, CA					
08:00									
08:30	Plenary Symposium 5 Eosinophil disorders: From mechanism to treatment FA, CA, BI, P	Plenary Symposium 6 Innate lymphoid cells in allergy and chronic inflammatory diseases BA, CI, I, A, D							
09:00									
09:30									
10:00									
10:30	Symposium 31 Non IgE gastro-intestinal disease in the allergy clinic AH, FA, P, PC	Symposium 32 Autoinflammation: From molecular mechanisms to new treatment strategies CI, I	Symposium 33 House dust mite in asthma and allergic rhinitis A, ENT, P	Symposium 34 Real life data for allergy research CA, D	Symposium 35 New ways of coping with cat allergy IT, CA, P, A, ENT	CSS 7 Company Sponsored Symposium	SSS 8 Ga2len	JM CR JM Case Reports Session	Workshop 7 Drug allergy anaphylaxis: Risk factors and management DA, CA, FA
11:00									
11:30									
12:00	Lunch and Poster Viewing in the Poster Area								
12:30	Pro & Con 5								
13:00	Pro & Con 6								
13:30	Symposium 36 Nutritional interventions for allergy prevention FA, P, FA, AH	Symposium 37 Mast cell diseases: An update D, P, CA	Symposium 38 Asthma challenges in clinical practice A, P, PC, AH	Symposium 39 Biologicals in daily practice of allergy treatment BI, A, DA, P, CA	Symposium 40 Basophils in drug allergy diagnosis DA, DI, CA	CSS 8 Company Sponsored Symposium	SSS 9 GARD	Hot Topic 4	Workshop 8 New immunological concepts in allergen-specific immunotherapy: Immune regulation beyond regulatory T cells? I, IT, BA
14:00									
14:30									
15:00									
15:30	Symposium 41 Interventional studies for the prevention of food allergy FA, P, PC, AH	Symposium 42 Novel insights in virus induced bronchiolitis and asthma I, P, A	Symposium 43 Properties of allergens that account for sensitization, cross reactivity and severity DI, CA	Symposium 44 Primary immune deficiency and allergy, what relationship CI, CA	Symposium 45 National Allergy Societies Forum	CSS 9 Company Sponsored Symposium	Year In Review 5	Workshop 9 When the athlete knocks on your door: Hints for an optimal management? A, IT, CA	
16:00									
16:30									
17:00									
17:30									
18:00						SAT 13 Company Sponsored Satellite Symposium	BM 20 IG Ocular Allergy - Open to all attendees OA	BM 21 IG Comparative and Veterinary Allergology - Open to all attendees	BM 22 IG OMICS and Systems Medicine - Open to all attendees BA
18:30									
19:10									

									07:00
									07:30
									08:00
									08:30
									09:00
									09:30
									10:00
OAS 22	OAS 23	OAS 24	OAS 25	LB OAS 3	PDS 22	PDS 23	PDS 24	LB PDS 4	10:30
									11:00
									11:30
									12:00
BM 16 Asthma Section - Open to all attendees A	BM 17 Dermatology Section - Open to all attendees D	BM 18 ENT Section - Open to all attendees ENT	BM 19 Immunology Section - Open to all attendees I	Lunch and Poster Viewing in the Poster Area					12:30
									13:00
OAS 26	OAS 27	OAS 28	OAS 29	LB OAS 4	PDS 25	PDS 26	PDS 27	PDS 28	13:30
									14:00
									14:30
									15:00
OAS 30	OAS 31	OAS 32	OAS 33		PDS 29	PDS 30	PDS 31	LB PDS 5	15:30
									16:00
									16:30
									17:00
BM 23 Patients Organisations Committee - Open to all attendees	BM 24 IG on Eosinophilic Esophagitis - Open to all attendees	BM 25 IG Infections and Allergy - Open to all attendees CA, I	SESSION GUIDE BM Business Meeting of EAACI Sections and Interest Groups - Open to all attendees CSS Company Sponsored Symposium SSS Sister Society Symposium OAS Oral Abstract Session PDS Poster Discussion Session SAT Company Sponsored Satellite Symposium LBO Late Breaking Oral Abstract Session JM Junior Members Programme LB PDS Late Breaking Poster Discussion Session	TOPIC TRACKS A Asthma AH Allied Health BA Basic Allergology BI Biologicals CA Clinical Allergology CI Clinical Immunology D Dermatology DA Drug Allergy DI Allergy Diagnostics ENT Ear, Nose, Throat FA Food Allergy I Immunology IT Immunotherapy	OA Ocular Allergy P Pediatrics PC Allergy management in Primary Care	SISTER SOCIETIES ACAAI American National Societies AAAAI American College of Allergy, Asthma & Immunology APAPARI American Academy of Allergy, Asthma & Immunology APAPARI Asia-Pacific Association of Pediatric Allergy, Respiriology and Immunology GAZLEN Global Allergy and Asthma European Network IRINE Immunology Research Institute of New England GARD Genetic and Rare Diseases Information Center SLAAI Latin American Society of Allergy, Asthma and Immunology WAF World Allergy Forum	17:30		
									18:00
									18:30
									19:00

08:00									
08:30	Plenary Symposium 7								
09:00	Skin as a gateway to allergy								
09:30	D, P, CA, PC								
10:00									
10:30	Symposium 46 Uncontrolled Asthma	Symposium 47 Contact dermatitis: An update	Symposium 48 Epithelial barrier in allergic sensitization and disease	Symposium 49 Food allergy from a different angle	Symposium 50 Integrating Component Resolved Diagnosis and Basophil testing in allergy diagnosis	OAS 34	Workshop 10 The interplay between infections and the immune system in rhino-sinusitis	OAS 35	LB OAS 5
11:00									
11:30	A, P, PC	D, P	I, AH, P, D, FA	FA, AH, CA	DI, CA, P		ENT, P, CA		
12:00									
12:30	Closing Ceremony		SESSION GUIDE BM Business Meeting of EAACI Sections and Interest Groups - Open to all attendees CSS Company Sponsored Symposium SSS Sister Society Symposium OAS Oral Abstract Session PDS Poster Discussion Session SAT Company Sponsored Satellite Symposium LBO Late Breaking Oral Abstract Session JM Junior Members Programme LB PDS Late Breaking Poster Discussion Session	TOPIC TRACKS A Asthma AH Allied Health BA Basic Allergology BI Biologicals CA Clinical Allergology CI Clinical Immunology D Dermatology DA Drug Allergy DI Allergy Diagnostics ENT Ear, Nose, Throat FA Food Allergy	I Immunology IT Immunotherapy OA Ocular Allergy P Pediatrics PC Allergy management in Primary Care	SISTER SOCIETIES ACAAI African National Societies AAAAI American College of Allergy, Asthma & Immunology APAPARI American Academy of Allergy, Asthma & Immunology APAPARI Asia-Pacific Association of Pediatric Allergy, Respiriology and Immunology GAZLEN Global Allergy and Asthma European Network IRINE Immunology Research Institute of New England GARD Genetic and Rare Diseases Information Center SLAAI Latin American Society of Allergy, Asthma and Immunology WAF World Allergy Forum			
13:00									
13:30									

The scientific programme includes the following plenary speakers:

- Ian Adcock, United Kingdom
- Cezmi Akdis, Switzerland
- Harri Alenius, Finland
- Carsten Bindslev-Jensen, Denmark
- Jonas Erjefalt, Sweden
- Wytse Fokkens, Netherlands
- Philippe Gevaert, Belgium
- Emma Guttman Yassky, United States
- Juha Kere, Sewden
- Gideon Lack, United Kingdom
- Donald Leung, United States
- Mika Mäkelä, Finland
- Benjamin Marsland, Switzerland
- Jenny Mjösberg, Sweden
- Hideaki Morita, Switzerland
- Antonella Muraro, Italy
- Marc Rothenberg, United States
- Hans-Uwe Simon, Switzerland
- Jonathan White, United Kingdom

For full faculty member information please refer to the scientific programme on the Congress website www.eaaci2017.org



New innovative and interactive Postgraduate Course on Allergology in Primary Care Saturday, 17 June 2017

GPs and specialists working together on difficult cases: An example of integrated care.
www.eaaci.org/eaaci-congresses/eaaci-2017/postgraduate-course-in-allergy-for-primary-care-doctors
 For more information please visit www.eaaci2017.org.

Saturday 17 June 2017: Exam

EAACI administers the annual European Knowledge Examination for Allergy and Clinical Immunology which will take place for the tenth time at the EAACI Congress 2017 in Helsinki. The exam includes about 100 multiple-choice questions in English and candidates have 3 hours to complete it. The exam does not replace or substitute any currently existing national examinations that are regularly held by national bodies. Everyone has the opportunity to use it as a tool for self evaluation. For more information and registration please consult the website.

For more information [click here](#)

Please contact eaaci2017hotels@eaaci.org for further information.

Please note that none of the hotels is officially categorised, there is no hotel rating system in Finland.



★★★★★

Hotel Kämp **1**

★★★★

Break Sokos Hotel Flamingo **2**

Crowne Plaza Helsinki **3**

GLO Hotel Art **4**

GLO Hotel Kluuvi **5**

Hilton Helsinki Airport Hotel **6**

Hilton Helsinki Kalastajatorppa Hotel **7**

Hilton Helsinki Strand Hotel **8**

Holiday Inn Helsinki **9**

Holiday Inn Helsinki City Centre **10**

Holiday Inn Helsinki - West Ruoholahti **11**

Hotel Indigo Helsinki - Boulevard **12**

Original Sokos Hotel Albert **13**

Original Sokos Hotel Tapiola Garden **14**

Original Sokos Hotel Vaakuna, Helsinki **15**

Radisson Blu Aleksanteri Hotel **16**

Radisson Blu Hotel Espoo **17**

Radisson Blu Plaza Hotel Helsinki **18**

Radisson Blu Royal Hotel Helsinki **19**

Radisson Blu Seaside Hotel Helsinki **20**

Scandic Espoo **21**

Scandic Grand Marina **22**

Scandic Järvenpää **23**

Scandic Marski **24**

Scandic Paasi **25**

Scandic Park Helsinki **26**

Scandic Simonkenttä **27**

Solo Sokos Hotel Torni **28**

not categorised Hotels

Hotel Cumulus Airport Vantaa **31**

Hotel Cumulus Hakaniemi Helsinki **32**

Hotel Cumulus Kaisaniemi Helsinki **33**

Hotel Cumulus Kallio Helsinki **34**

Hotel Cumulus Meilahti Helsinki **35**

Holiday Inn Helsinki - Vantaa Airport **36**

Klaus K Hotel **37**

Original Sokos Hotel Helsinki **38**

Original Sokos Hotel Vantaa **39**

Hotelli Seurahuone Helsinki **40**

Rantasipi Airport Vantaa **41**

★★★

Original Sokos Hotel Pasila **29**

Original Sokos Hotel Presidentti **30**

Sponsorship and Exhibition

This section contains information that is promotional in nature, distinct from the scientific/educational elements of the Congress.

Founder Sponsors

EAACI and the Local Organising Committee gratefully acknowledge the support of the 2017 Founder Sponsors and Corporate Societies.

Founder Sponsors Platinum



CSS 4: Allergic rhinitis control: fit for life
Monday, 19 June 2017
10:45 - 12:15



CSS 2
Sunday, 18 June 2017
13:30 - 15:00

Founder Sponsors Gold



CSS 7
Tuesday, 20 June 2017
10:30 - 12:00



CSS 9: FASIT (Future of the Allergists and Specific Immunotherapy) meets EAACI: Novel Patient Profiling, Promising Treatments and Regulatory Challenges
Tuesday, 20 June 2017
15:30 - 17:00



SAT
Sunday, 18 June 2017
17:30 - 19:00



CSS 5: Roadmap of Innovative and Registered Allergen Immunotherapy
Monday, 19 June 2017
13:45 - 15:15



CSS 3
Sunday, 18 June 2017
15:30 - 17:00



CSS 1
Sunday, 18 June 2017
10:30 - 12:00



CSS 6: Consolidated strategies in the management of allergies
Monday, 19 June 2017
15:45 - 17:15

Founder Sponsors Silver



SAT: Depigmented modified allergen extracts: present and future evidence
Monday, 19 June 2017
17:45 - 19:15



SAT
Sunday, 18 June 2017
17:30 - 19:00

EAACI thanks its Founder Sponsors for supporting its Green Meetings initiative.

Additional Exhibitors and Sponsors

Abionic SA	Inmunotek S.L.
AstraZeneca	Karger Publishers
Boehringer Ingelheim	LINICAL
BÜHLMANN Laboratories AG	LOFARMA SPA
Chiesi	Macroarray Diagnostics
CIRCISSIA	NASALEZE INTERNATIONAL LTD
Citeq Biologics	Omega Diagnostics Ltd.
CSL Behring	Orion Corporation Orion Pharma
DBV Technologies	Red Maple Trials Inc.
DIATER	Sanofi Genzyme and Regeneron
Dr. Fooke-Achterrath Laboratorien GmbH	Shire International GmbH
DST GmbH	Siemens Healthineers
EPG Online	SmartPractice
EUROIMMUN AG	Teva Pharmaceuticals
FAES FARMA and The Menarini Group	The MENARINI Group
Fresenius Medical Care	World Allergy Organization (WAO)
GlaxoSmithKline	
Hitachi Chemical Diagnostics Inc.	
HYCOR Biomedical	
Indoor Biotechnologies Ltd	

Additional Company Sponsored Satellite Symposia

Sunday, 18 June 2017

17:30 - 19:00
FAES FARMA and
The MENARINI Group

17:30 - 19:00
GlaxoSmithKline

17:30 - 19:00
Novartis Pharma AG

17:30 - 19:00
Shire International GmbH

Monday, 19 June 2017

17:45 - 19:15
AstraZeneca

17:45 - 19:15
CSL Behring

17:45 - 19:15
DBV Technologies

17:45 - 19:15
Teva Pharmaceuticals

17:45 - 19:15
Sanofi Genzyme and Regeneron

Tuesday, 20 June 2017

17:30 - 19:00
Sanofi Genzyme and Regeneron

17:30 - 19:00
Aimmune Therapeutics Inc.

Industry Key Opinion Leader Insights

Sunday, 18 June 2017

15:00 - 15:30
DBV Technologies

Subcutaneous AIT

Allergopharma - the specialist in diagnosis
and therapy of allergic diseases



Visit us at
www.allergopharma.com

URIACH

is pleased to announce its

SPONSORED SYMPOSIUM

which will take place at the

EAACI Congress 2017 in Helsinki, Finland

Monday 19 June from 15:45 to 17:15 h

SAVE THE DATE!



EAACI Headquarters

Hagenholzstrasse 111
3rd Floor
8050 Zurich
Switzerland
Tel: +41 44 205 55 33
Fax: +41 44 205 55 39
info@eaaci.org
www.eaaci.org

Messukeskus

Messuaukio 1
00521 Helsinki
Finland
Tel. +358 40 450 3250
<http://messukeskushelsinki.fi>

General

eaaci2017@eaaci.org

Registration/Visa Letters

eaaci2017registration@eaaci.org

Speakers' Contact

eaaci2017scientific@eaaci.org

Abstract Handling

eaaci2017abstract@eaaci.org

Exhibition and Sponsorship

eaaci2017sponsorship@eaaci.org

Hotel Requests

eaaci2017hotels@eaaci.org

Important Dates

Start abstract submission.....	20 October 2016
Deadline for abstract submission	15 January 2017
Deadline for an EAACI Congress Scholarship application.....	15 January 2017 (for JM abstract submitters only)
Deadline for early registration fee.....	8 February 2017
Late-breaking abstract submission period.....	1 - 15 March 2017
Deadline for middle registration fee	10 May 2017
Deadline for cancellation of individual hotel bookings.....	31 March 2017 (less EUR 35 fee)
.....handling (Different terms and conditions apply for group bookings)	
Deadline for cancellation of registrations with refund	27 April 2017 (less EUR 75 handling fee)

Some of the many reasons to attend...

- Top science from **over 400 faculty members in 340 sessions** at the largest allergy Congress worldwide in 2017 – **8,000 participants from over 100 countries** expected
- Almost **2,000 abstracts** expected to be presented – be part of the programme –

abstract submission deadline 15 January 2017

- Visit the **Clinical Village** to try out different procedures and equipment used in the diagnosis and treatment of allergic diseases
- Add a **Postgraduate or Learning Lounge Course** to your registration
- Never miss a session – access webcasts, abstracts and e-posters in the **Virtual Congress Hub** onsite
- **Connect with your peers** – take advantage of the networking opportunities

25% discount on registration rates for EAACI members

- Something for everyone including Allied Health Day, Russian Day, Primary Care Postgraduate Course, interactive Workshops and much more.
- Explore the large industry exhibition